

Electrabel [Belgium]



State-of-the-art energy network monitoring

At the heart of Electrabel's Regional Transmission Center (RTC), responsible for the distribution of power in the Brussels region, twelve of Barco's projection modules have been installed to operate as a rapid display of information.

It was the first DLP-based total display solution installed in Belgium.

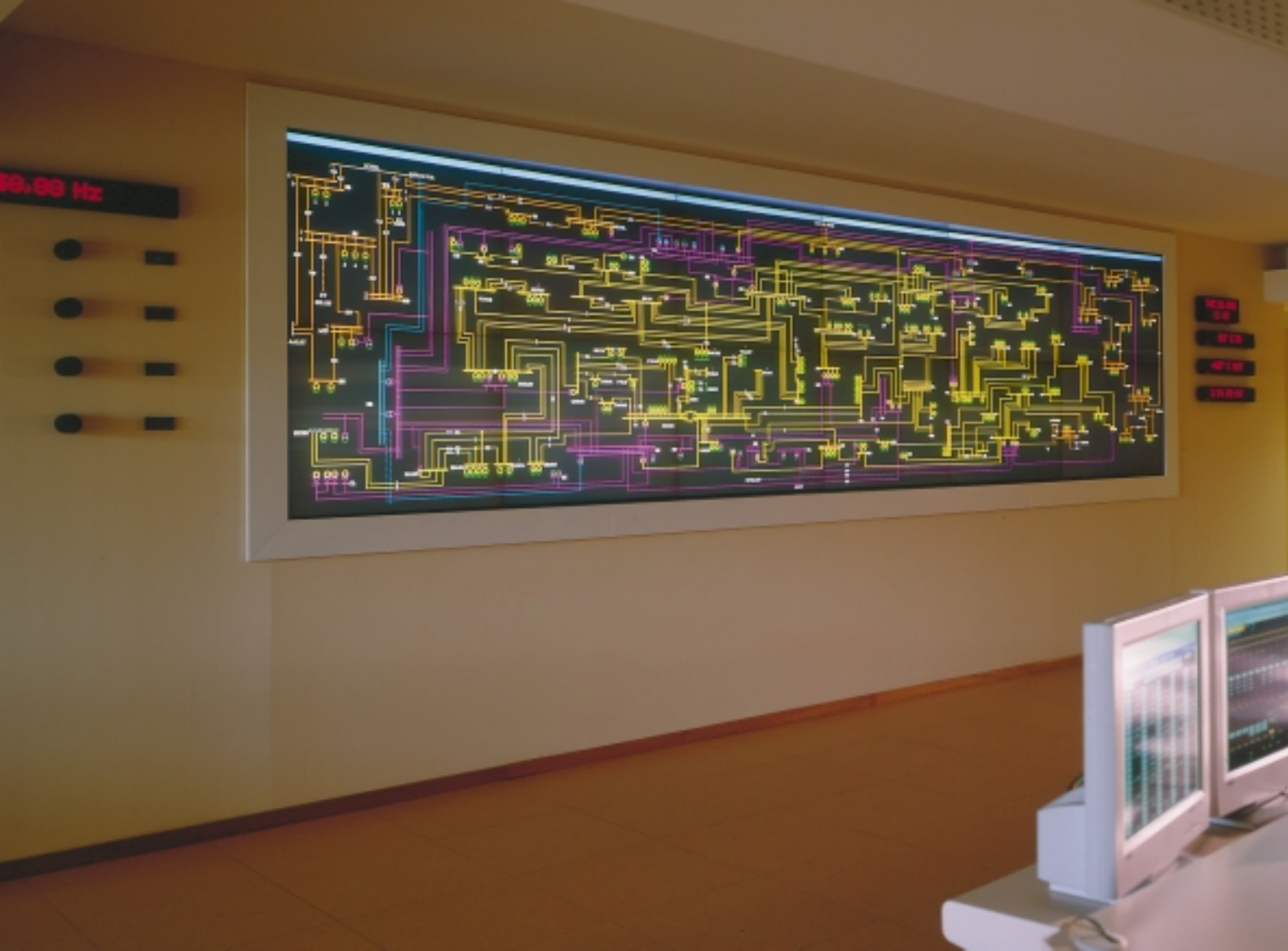
Employing about 15,000 people nationwide, Electrabel produces, transports and distributes power to its 4,200,000 customers spread all over Belgium. For part of Belgium Electrabel also produces steam and distributes cable TV programs, gas and drinking water.

5 Regional Transmission Centers (RTC) and a nationwide Coordination Center for the Production and Transmission of Electrical Power (CPTÉ) guarantee a consistent power supply.

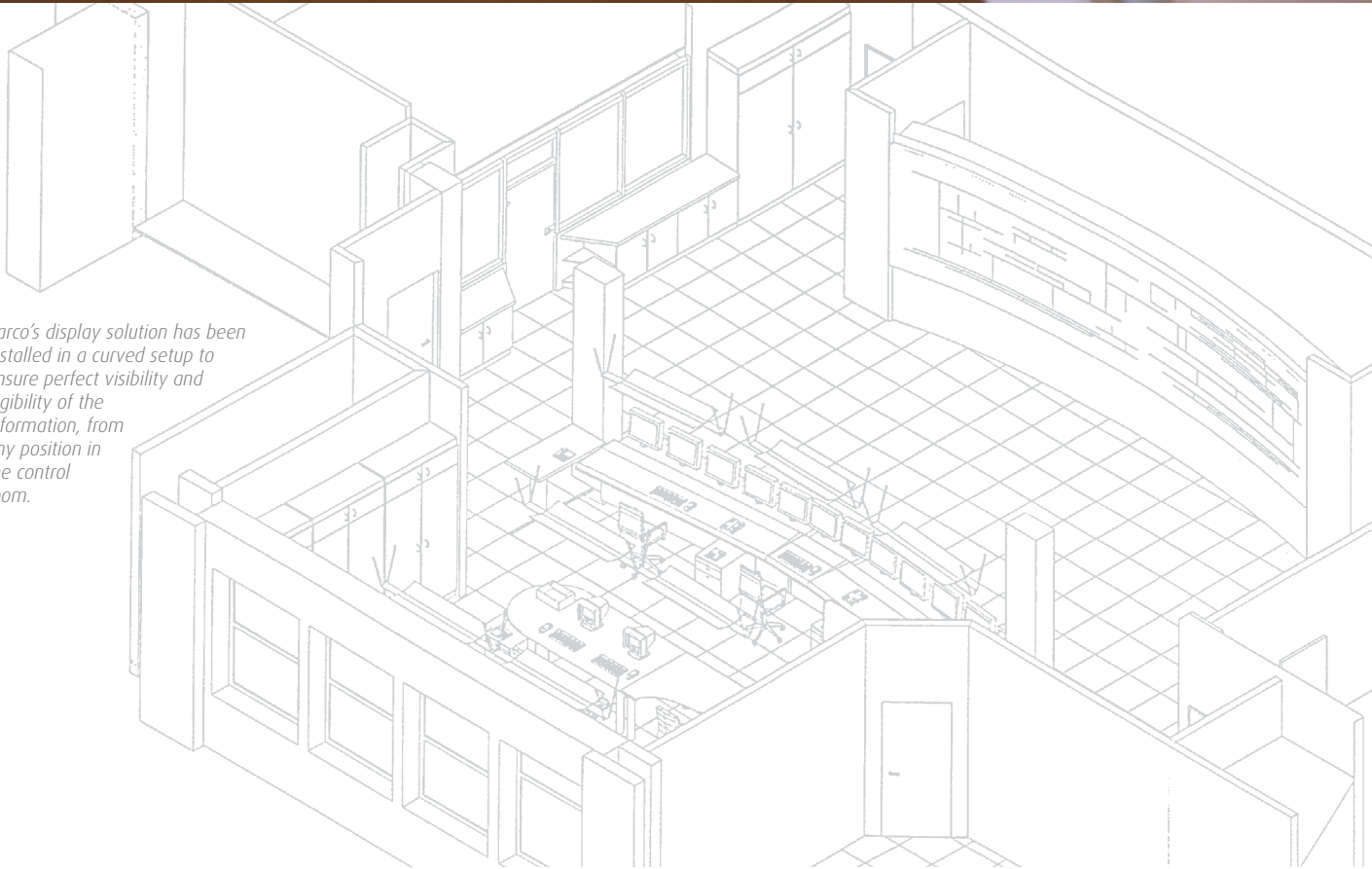
To improve the efficiency at the Regional Transmission Center in Linkebeek, Brussels, Electrabel commissioned Barco to install a total display solution giving the operators a dynamic overview of the electric power network 24 hours a day and 7 days a week.

BARCO

Visibly yours

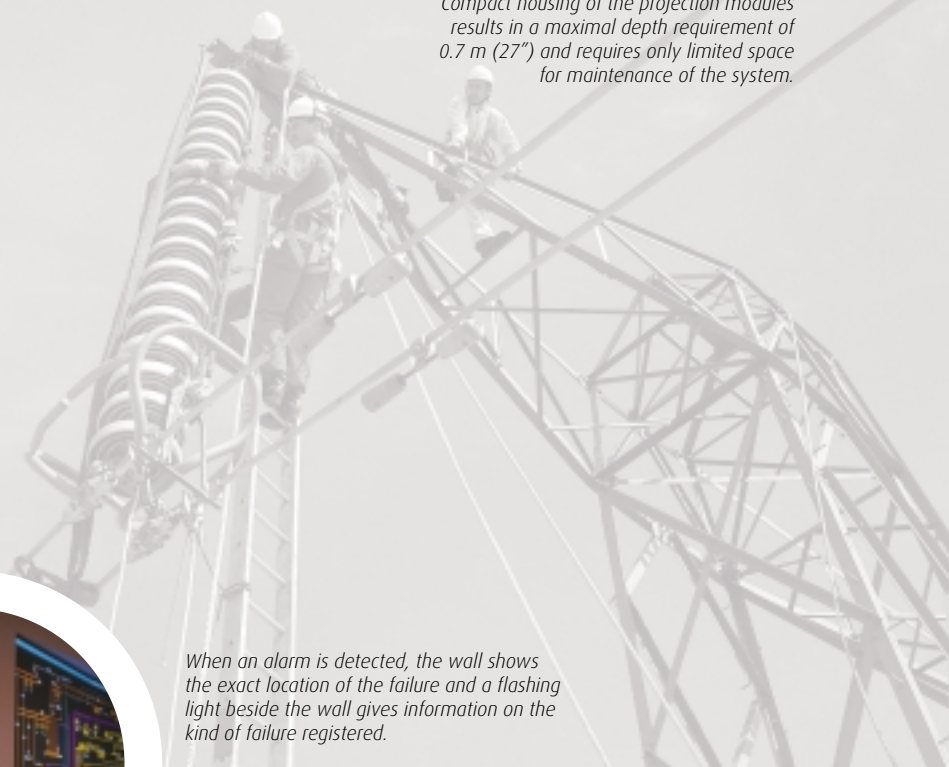


Barco's display solution has been installed in a curved setup to ensure perfect visibility and legibility of the information, from any position in the control room.

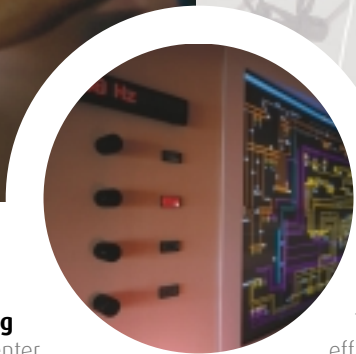




Compact housing of the projection modules results in a maximal depth requirement of 0.7 m (27") and requires only limited space for maintenance of the system.

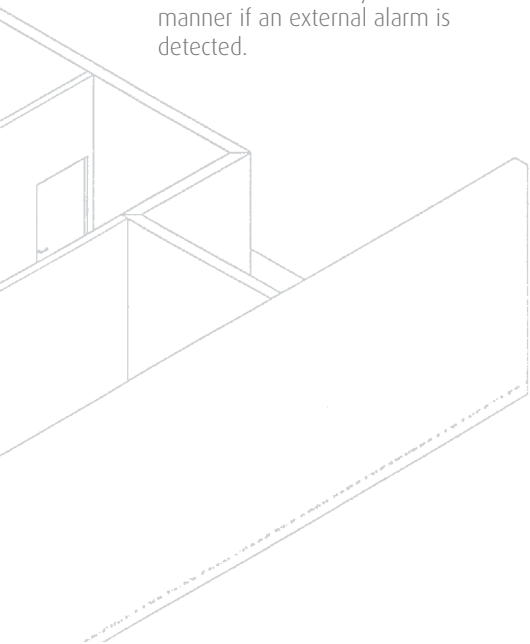


When an alarm is detected, the wall shows the exact location of the failure and a flashing light beside the wall gives information on the kind of failure registered.



Instant failure reporting

At the RTC Dispatching Center operators control the complete network of the Brussels region and must react in a timely and efficient manner if an external alarm is detected.



To improve the efficiency of the Dispatching Center, the RTC has replaced its static visualization system, which used color bars and blocks, by a Barco display wall in a 6x2 module configuration. It allows the operators to view the complete network status real time and in detail or to display other data images, sent from the monitor of the dispatcher.

Employing about 15,000 people nationwide, Electrabel produces, transports and distributes power to its 4,200,000 customers spread all over Belgium. For part of Belgium Electrabel also produces steam and distributes

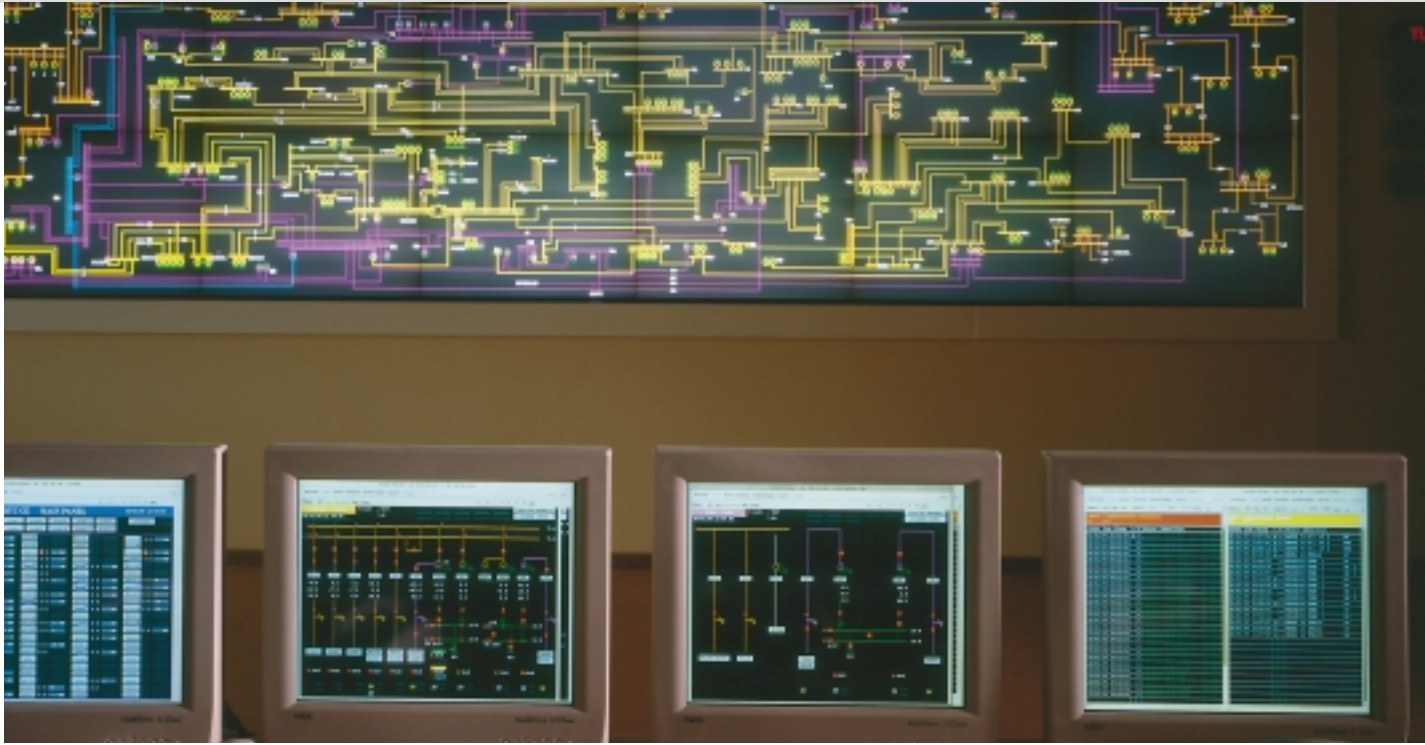
State-of-the-art technologies

Before purchasing the display wall, the Brussels RTC evaluated all possible technologies and solutions.

In the end, they selected the DLP™ based Barco system. The system consists of 50" diagonal projection modules, each with an SVGA-resolution (800 x 600 pixels) and an installation depth of only 0.70 m (27").

The advanced technologies used in the RTC include twelve 20" TFT flat panel monitors and a sophisticated infrared remote control to align vital parameters such as lighting, temperature, etc. and a SCADA system.

The operators work on their own workstations and then send the information to the display wall. They can move a mouse towards a specific point on the screen, but without changing the content of the information, as RTC Brussels decided not to allow direct telecontrol on the display wall.



Customer benefits

"The system was mainly selected, because of its high brightness, which allows the operator to work in normal lighting environments," says Mr Mahy, Head of the Teletransmission Service of RTC Brussels. "Another major specification for this application was the X-Windows compatibility. The SCADA system needed no adaptation to control the display wall."

According to Electrabel, the seamlessness of the display ensures a complete overview of the distribution network without loss of any information which is sure to be critical for applications of this kind.

A third decisive factor was the use by Barco of a light engine based on two DMD™ chips to provide better colors than the 1-chip engine of some competing systems.

Barco Control Rooms - Belgium
Noordlaan 5, 8520 Kuurne
Phone (32) (56) 368211
E-mail sales.bcd@barco.com

Germany Phone (49) (721) 62010
USA Phone (1) (770) 2183200
Brazil Phone (55) (11) 38421656
Japan Phone (81) (3) 57628720
Hong Kong Phone (852) 23970752

Ref. no. R599251 November '03

Barco Control Rooms is an ISO 9001 registered company.
The information and data given are typical for the equipment described. However any individual item is subject to change without any notice.
The latest version of this product sheet can be found on www.barcocontrolrooms.com