

JME, Czech Republic



Supply & distribution of electric power

Jihomoravská Energetika has market leadership for the supply of electricity in the southern Moravian region and is the second largest electricity distribution company in the Czech Republic in terms of total electricity supply. A new middle-voltage control room for monitoring and future control of the HV networks in the entire county, including a low-voltage control station, has been built on the premises of the regional control room in Brno.

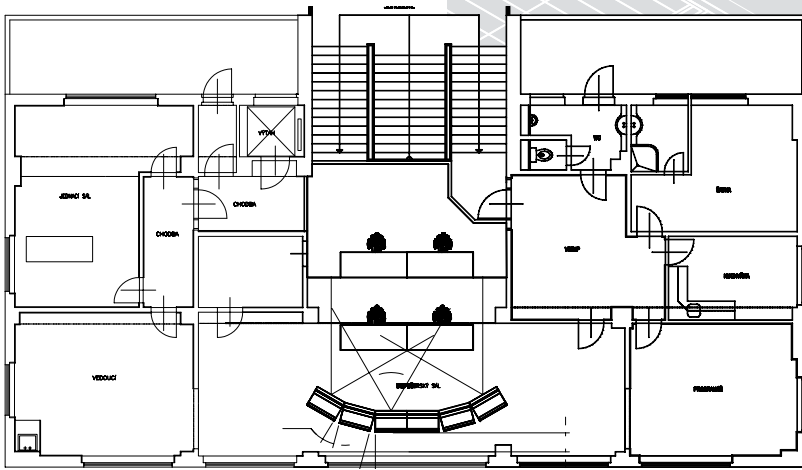
Barco's network monitoring solution

The entire middle-voltage electrical network is controlled in 24/7 operation from the workstations of the control system. It allows synoptic monitoring of the HV networks of individual regional control rooms. The newly integrated HV control system allows the transfer of the remote HV network control operations from individual regional control rooms to the new central HV control center in Brno, making control operations much more efficient. Barco's large screen display wall allows the operators to display exhaustive information about the status of the entire JME electricity distribution network in real time, thus improving the overall quality of the electricity distribution system.

The display wall consists of a matrix of rear projection modules in order to provide a single, high resolution display area capable of displaying a huge amount of information simultaneously without a need for multiple zooming. The Barco display wall installed at JME's control room in Brno comprises 3x6 OverView MP50 projection modules in a curved setup. The total size of the display wall is 2,250 x 6,000 mm, its total resolution being 2,304 x 6,444 pixels.

BARCO

Visibly yours



The display wall is connected to the computer network of the control system via a Local Area Network. The utilized operating systems are Linux and QNX. In addition to the network, video signals from up to three sources can be displayed on the display wall. Currently, TV and satellite signals are used to monitor upcoming critical weather conditions such as frost depositing on the power lines, storms, etc.

The rear projection modules utilize the polysilicon LCD technology that meets the demanding requirements for professional display systems in 24/7 operations. Remote control software enables every operator in the control room to access the network or parts of it on the display wall with his own mouse and keyboard.

The serviceability of the entire solution allows the inclusion of an integrated control system by CUE. This system controls all audio and video input devices, all audio, video and PC outputs, and even the blinds and lighting of the operator stations.

Ref. no. R599679 September '03

Barco Control Rooms is an ISO 9001 registered company. The information and data given are typical for the equipment described. However any individual item is subject to change without any notice. © September 2003 by Barco

Barco Control Rooms - Belgium
 Noordlaan 5, 8520 Kuurne
 Phone (32) (56) 36-8211
 E-mail sales.bcd@barco.com

Germany Phone (49) (721) 6201-0
 USA Phone (1) (770) 218-3200
 Brazil Phone (55) (11) 3842-1656
 Japan Phone (81) (3) 5762-8720
 Hong Kong Phone (852) 2397-0752

BARCO

Visibly yours