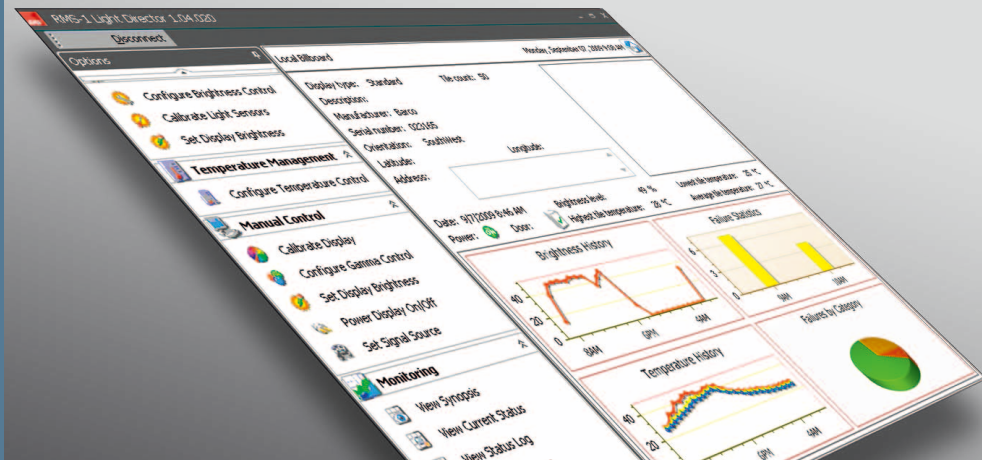


# RMS-1

## Remote management software for digital out of home LED displays



### Key benefits

- Automated billboard setup and alignment
- 24/7 reliable status monitoring
- 24/7 intelligent brightness control
- Intuitive remote control and configuration
- Advanced remote diagnostics on different levels
- Automated email alerts
- Web services for easy XML integration

RMS-1 is a user friendly software for remote control, monitoring and diagnostics of digital billboards. It combines intelligent agent software with an intuitive, graphical interface for easy display control, making setup extremely easy. RMS-1 can be installed on the DMP-100 video processor or on a separate small-format controller PC.

The software is specifically designed for 24/7 reliable and continuous hardware monitoring. Thanks to automatically generated email alerts, you always know the exact status of your LED display. RMS-1 delivers a daily status overview to your mailbox, containing alerts on various action levels. Also, custom software can easily integrate the RMS-1 agent by using the standard web service interface.

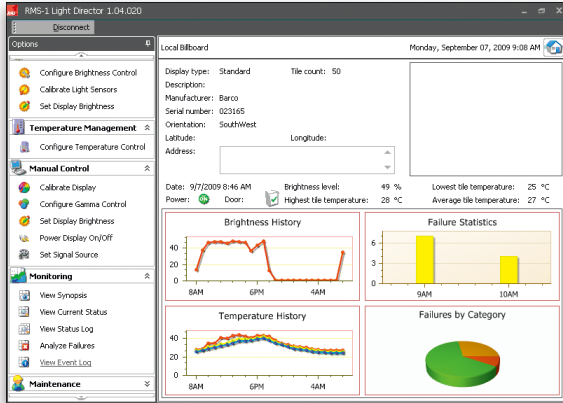
One of the RMS-1 key features is the integrated intelligent brightness control. Whether it is day or night, cloudy or bright sunlight, the software automatically adjusts the billboard's brightness levels for optimal viewing experiences, in line with local legal limitations. This way it assures your display operates with the most economical power consumption possible. The software can detect any kind of failure and has various built-in fail-safe mechanisms to automatically protect your content and hardware at all time.

RMS-1 is designed for and compatible with all latest Barco out of home products.

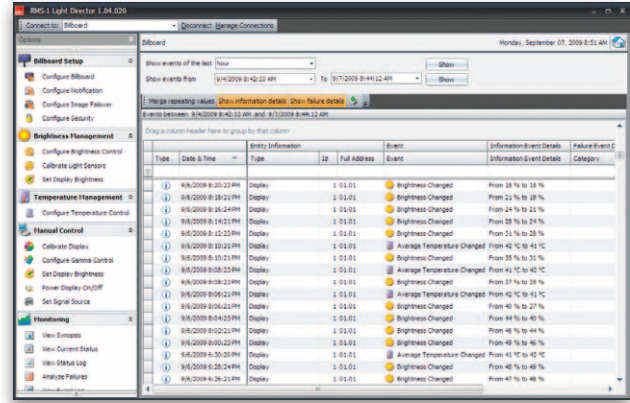
**BARCO**

Visibly yours

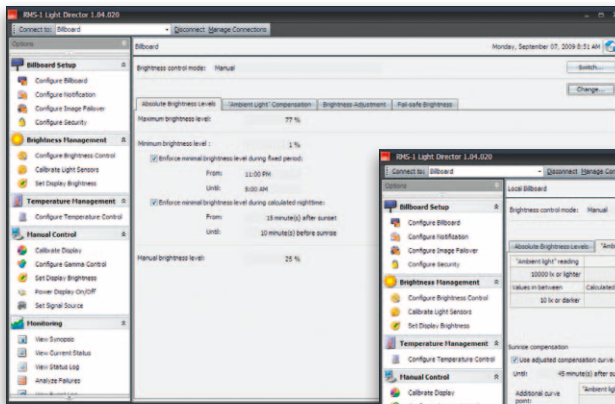
## Screenshots



The Dashboard page gives you a full status overview of the LED display at any time of the day.



Display status on module level



Intelligent brightness control

## System requirements

- Windows XP
- 1.5GHz Processor
- 1Gb RAM
- Min 100Mbs Network connection
- .Net 3.5
- SQL Server CE 3.5

## Ordering info

Pre-installed on ARK-1370 controller PC (R9870002)  
Pre-installed on DMP-100 digital media processor (R9828833)

September 2009

While the information and data given are typical for the equipment described, product specifications are subject to change without notice. The latest version of this product sheet can be found at [www.barco.com](http://www.barco.com).

**Belgium**  
Pres. Kennedypark 35  
B-8500 Kortrijk  
Tel: +32 56 36 80 47  
Fax: +32 56 36 83 86  
[sales.media@barco.com](mailto:sales.media@barco.com)

**United States**  
11101 Trade Center Drive  
Rancho Cordova, CA 95670  
Tel: +1 888 414-7226  
Fax: +1 916 859-2515  
[salesusa@barco.com](mailto:salesusa@barco.com)

**Asia Pacific**  
No. 16 Changsheng Road  
Changping Dist., Beijing, PRC, 102200  
Tel: +86 10 8010 1166  
Fax: +86 10 8970 9812  
[marketing.media@barco.com](mailto:marketing.media@barco.com)



Visibly yours